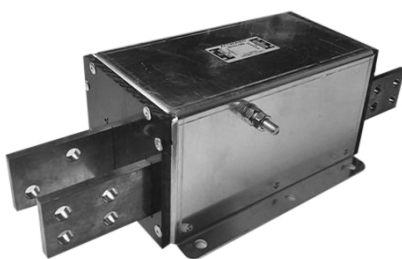
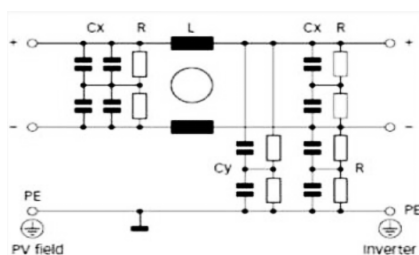


# Series AR1707

Filter for PV Inverters



## Circuit diagram



Electronics  
 • High Power  
 Electromechanical  
 Custom



## Technical Specifications:

### Manufacture

Metal case, internal components sealed with self-extinguishing resin

### Electrical specifications:

Rated voltage (Vr)	Max 1200 Vdc
Voltage test (2s.)	line to ground 3600 Vdc line to line 3000 Vdc

Climatic category	HPF (40/100/21) -40°C to + 100°C
-------------------	-------------------------------------

## Caratteristiche tecniche:

### Costruzione

Custodia metallica, componenti interni sigillati con resina autoestinguente Vo

### Caratteristiche elettriche:

Tensione nominale (Vr)	Max 1200 Vdc
Tensione di prova (2s.)	linea e massa 3600 Vdc linea e linea 3000 Vdc

Categoria climatica	HPF (40/100/21) -40°C a + 100°C
---------------------	------------------------------------

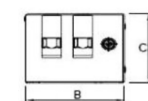
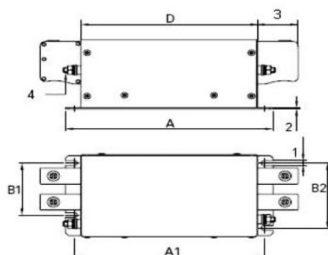
Code	Rated Current		Connections
	A	55°C (40°C)	

AR1707.25A	25	(28)	M
AR1707.50A	50	(57)	M
AR1707.75A	75	(86)	M
AR1707.100A	100	(115)	M
AR1707.150A	150	(173)	M
AR1707.250A	250	(288)	B
AR1707.400A	400	(460)	B
AR1707.600A	600	(650)	B
AR1707.800A	800	(920)	B
AR1707.1000A	1000	(1150)	B
AR1707.1500A	1500	(1600)	B

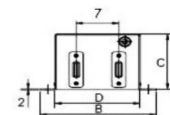


AR1707A.25A	25	(28)	M
AR1707A.50A	50	(57)	M
AR1707A.75A	75	(86)	M
AR1707A.100A	100	(115)	M
AR1707A.150A	150	(173)	M
AR1707A.250A	250	(288)	B
AR1707A.400A	400	(460)	B
AR1707A.600A	600	(650)	B
AR1707A.800A	800	(920)	B
AR1707A.1000A	1000	(1150)	B
AR1707A.1500A	1500	(1600)	B
AR1707A.1500A-S*	1500	(1600)	B

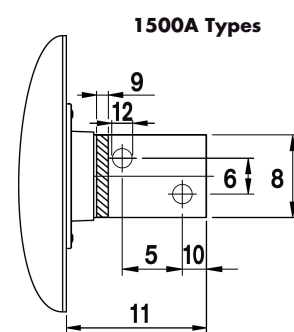
\*Rated Voltage (Vr) Max 1500 Vdc



Dimensions Case:  
25 to 150A types



Dimensions Case:  
250 to 1500A types



Dimensions	25A	50A	75A	100A	150A	250A	400A	600A	800A	1000A	1500A
A	170	200	200	220	250	300	300	300	300	300	300
B	80	95	95	125	140	190	190	190	190	200	200
C	65	80	80	95	115	110	110	110	110	140	150
D	140	170	170	190	220	140	140	140	140	150	150
A1	152,5	182,5	182,5	202,5	232,5	130	130	130	130	130	130
A2						110	110	110	110	110	110
B1	45	60	60	80	100	165	165	165	175	175	175
B2	60	75	75	100	120						
1	5,5	5,5	5,5	5,5	5,5	∅12	∅12	∅12	∅12	∅12	∅12
2	1	1,5	1,5	1,5	2	2	2	2	3	3	3
3	25	39	39	45	50	58	58	58	6	65	100
4	M5	M6	M6	M8	M10	M10	M10	M10	M12	M12	M12
5											43
6											26
7						70	70	70	70	70	70
8						25	25	25	40	40	60
9						6	6	6	8	8	10
10						15	15	15	20	20	17
11						58	58	58	65	65	100
12						∅10,5	∅10,5	∅10,5	∅14	∅14	∅14

## APPROVALS

