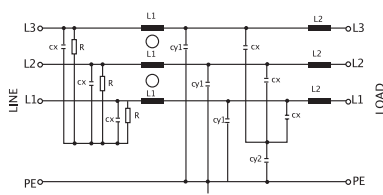




Three-phase filter without neutral line and with two stages.

Filtro rete trifase senza neutro doppia cella.

Circuit diagram



Technical Specifications:

Manufacture

Metal case, internal components sealed with self-extinguishing resin Vo

Connections

Terminal screws

Electrical specifications:

Rated voltage (Vr)	0/480 Vac at 50/60Hz
Rated current (Ir)*	referred to room temp. = 40°C
Leakage current (IL)	≤ 3 mA
Voltage test (2s.)	line to ground 3000Vdc or 2100 Vac line to line 2400 Vdc
Climatic category	HPF (25/085/21) -25°C to +85°C

Caratteristiche tecniche:

Costruzione

Custodia metallica, componenti interni sigillati con resina autoestinguente Vo

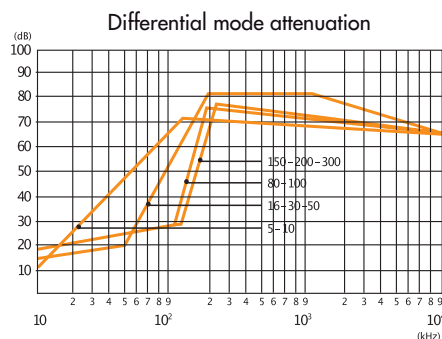
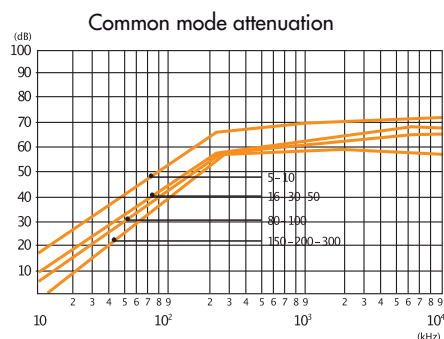
Terminali

Morsetti a vite

Caratteristiche elettriche:

Tensione nominale (Vr)	0/480 Vac a 50/60Hz
Corrente nominale (Ir) *	riferita ad una temp.di 40°C
Corrente di fuga (IL)	≤ 3 mA
Tensione di prova (2s.)	linea e massa 3000 Vdc o 2100 Vac linea e linea 2400 Vdc
Categoria climatica	HPF (25/085/21) -25°C to +85°C

Code	IR(A)*	Cx(µF)	Cy1(nF)	Cy2(nF)	L1(mH)	L2(µH)	Case
AR6669.5A	3x5	2.2	47	4.7	3x7	3x4	F13
AR6669.10A	3x10	2.2	47	4.7	3x5	3x4	F13
AR6669.16A	3x16	10	47	4.7	3x2	3x4	F11
AR6669.30A	3x30	10	47	4.7	3x2	3x4	F11
AR6669.50A	3x50	10	47	4.7	3x2	3x4	F7
AR6669.80A	3x80	10	47	4.7	3x18	3x4	F7
AR6669.100A	3x100	10	47	4.7	3x1.5	3x4	F40B
AR6669.150A	3x150	10	47	4.7	3x1.3	3x2	F40B
AR6669.200A	3x200	10	47	4.7	3x0.9	3x2	F40B



Dimensions:

See the page Dimensions
 Consultare la pagina Dimensioni

APPROVALS

