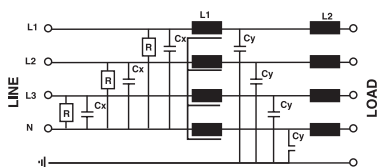




Three-phase filter + neutral line.

Filtro rete trifase con neutro.

Circuit diagram



Technical Specifications:

Manufacture

Metal case, internal components sealed with self-extinguishing resin Vo

Connections

Terminal screws or screws M5 - M6

Caratteristiche tecniche:

Costruzione

Custodia metallica, componenti interni sigillati con resina autoestinguente Vo

Terminali

Morsetti a vite o a vite M5 - M6

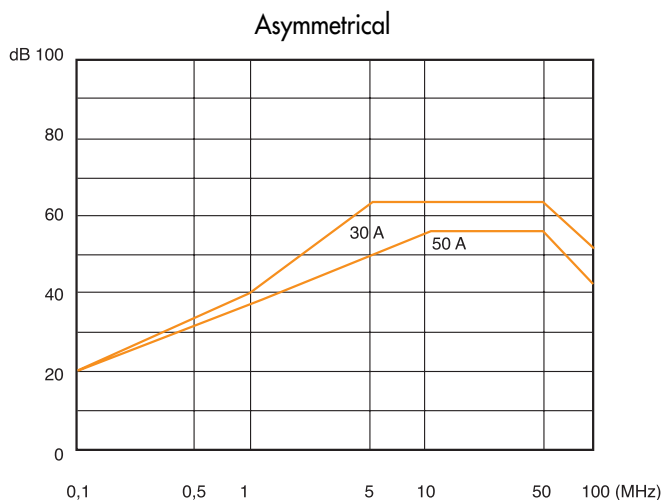
Electrical specifications:

Rated voltage (Vr)	0/480 Vac at 50/60Hz
Rated current (Ir)*	referred to room temp.= 40°C
Leakage current (IL)	≤ 3,5 mA
Voltage test (2s.)	line to ground 3000 Vdc or 1800 Vac line to line 1700 Vdc
Climatic category	HPF (25/085/21) -25°C to +85°C

Caratteristiche elettriche:

Tensione nominale (Vr)	0/480 Vac a 50/60Hz
Corrente nominale (Ir)*	riferita ad una temp.di 40°C
Corrente di fuga (IL)	≤ 3,5 mA
Tensione di prova (2s.)	linea e massa 3000 Vdc o 1800 Vac linea e linea 1700 Vdc
Categoria climatica	HPF (25/085/21) -25°C to +85°C

Code	IR(A)*	Cx(μF)	Cy(pF)	R=MΩ	L1(mH)	L2(μH)	Case
AR300.16A	16	1	4700	1	1.4	1.4	F13
AR300.30A	30	0.47	15000	1	1	1	F11
AR300.50A	50	0.68	15000	1	1	1	F11



APPROVALS



Dimensions:

See the page Dimensions
 Consultare la pagina Dimensioni