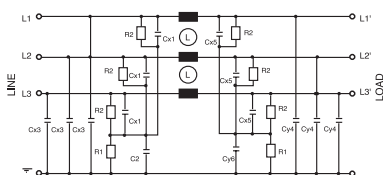


Tree-phase filter without neutral line.

Filtro rete trifase senza neutro.

### Circuit diagram



### Technical Specifications:

#### Manufacture

Metal case, internal components sealed with self-extinguishing resin Vo

#### Connections

Terminal screws

### Electrical specifications:

<b>Rated voltage (Vr)</b>	0/480Vac at 50/60Hz
<b>Rated current (Ir)*</b>	referred to room temp.= 40°C
<b>Leakage current (IL)</b>	≤ 18mA
<b>Voltage test (2s.)</b>	line to ground 3000 Vdc or 1800 Vac line to line 1700 Vdc
<b>Climatic category</b>	HPF (25/085/21) -25°C to +85°C

### Caratteristiche tecniche:

#### Costruzione

Custodia metallica, componenti interni sigillati con resina autoestinguente Vo

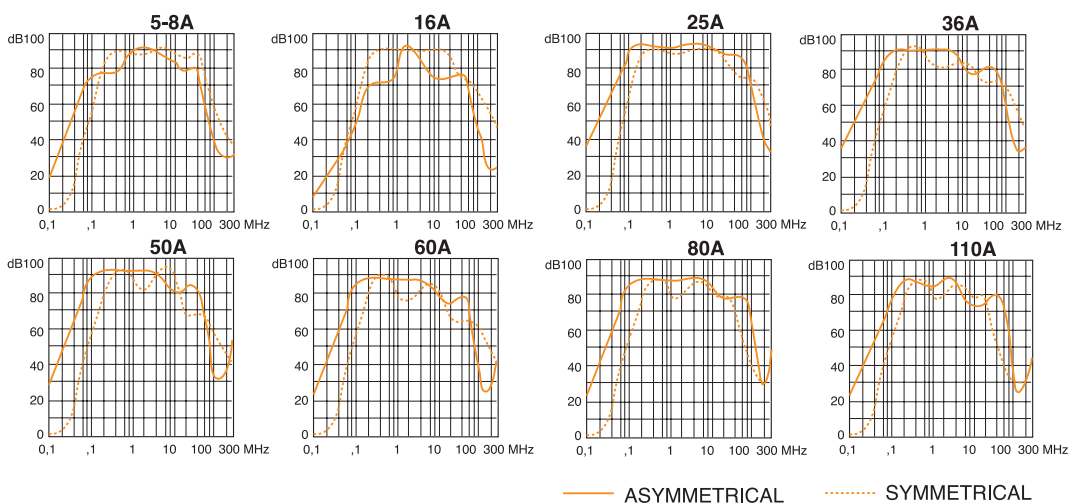
#### Terminali

Morsetti a vite

### Caratteristiche elettriche:

<b>Tensione nominale (Vr)</b>	0/480Vac a 50/60Hz
<b>Corrente nominale (Ir)*</b>	riferita ad una temp.di 40°C
<b>Corrente di fuga (IL)</b>	≤ 18mA
<b>Tensione di prova (2s.)</b>	linea e massa 3000 Vdc o 1800 Vac linea e linea 1700 Vdc
<b>Categoria climatica</b>	HPF (25/085/21) -25°C to +85°C

Code	IR(A)*	Cx1(µF)	Cx2(µF)	Cy3(µF)	Cy4(µF)	Cy5(µF)	Cy6(µF)	L1(mH)	R=MQ	Case
AR282.6A	6	1	-	0.1	0.01	2.2	-	10	0.47	F6
AR282.8A	8	1	-	0.1	0.01	.2	-	10	0.47	F13
AR282.16A	16	1	-	0.1	0.01	2.2	-	6	0.47	F11
AR282.25A	25	4.4	1	0.01	0.047	4.4	1	3	0.47	F11
AR282.36A	36	4.4	1	0.01	0.047	4.4	1	2	0.47	F7
AR282.50A	50	4.4	1	0.01	0.1	4.4	1	1	0.47	F7
AR282.64A	64	4.4	1	0.01	0.1	4.4	1	0.8	0.47	F7
AR282.80A	80	6.6	1	0.01	0.1	6.6	1	0.7	0.47	F7
AR282.110A	110	6.6	1	0.01	0.1	6.6	1	0.6	0.47	F40B



— ASYMMETRICAL      ..... SYMMETRICAL

### Dimensions:

See the page Dimensions  
 Consultare la pagina Dimensioni

### APPROVALS

