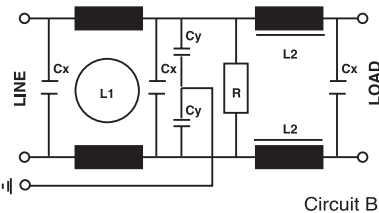
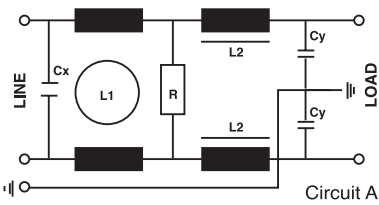




This AR45 series was realized to reduce the insertion loss created by Switching, especially in the frequency field 10KHz - 150KHz.

I filtri della serie AR45 sono stati realizzati per ridurre le radiointerferenze prodotte da alimentatori Switching, in particolare nel campo di frequenza 10KHz - 150 KHz

**Circuit diagram**



**Technical Specifications:**

**Manufacture**

Metal case, internal components sealed with self-extinguishing resin Vo

**Connections**

Faston 6.3 x 0.8mm ( $\leq 20A$ )  
 Flexible leads M5 screws  
 Ground terminal connected to case

**Electrical specifications:**

<b>Rated voltage (Vr)</b>	max. 250 Vac at 50/60 Hz
<b>Rated current (Ir)*</b>	referred to room temp.= 40°C
<b>Leakage current (IL)</b>	$\leq 0,6$ mA
<b>Voltage test (2s.)</b>	line to ground 3000 Vdc or 1800 Vac line to line 1700 Vdc
<b>Climatic category</b>	HPF (25/085/21) -25°C to +85°C

**Caratteristiche tecniche:**

**Costruzione**

Custodia metallica, componenti interni sigillati con resina autoestinguente Vo

**Terminali**

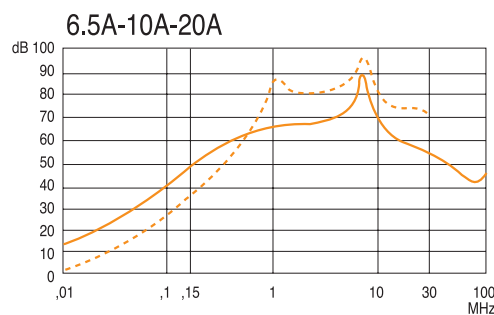
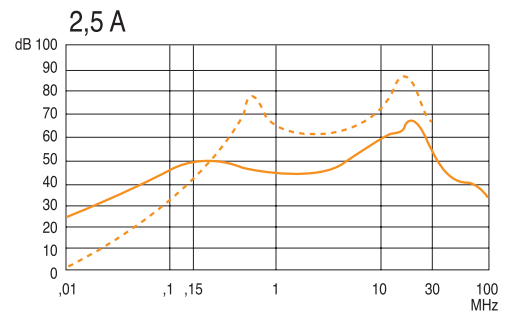
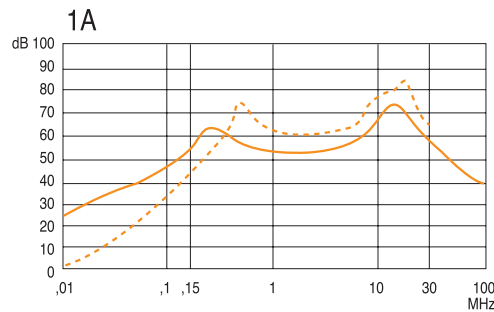
Faston 6.3 x 0.8mm ( $\leq 20A$ )  
 Cavi flessibili o viti da M5  
 Terminale di terra collegato alla custodia

**Caratteristiche elettriche:**

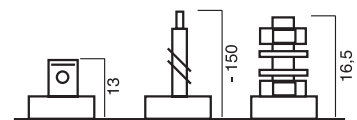
<b>Tensione nominale (Vr)</b>	max 250 Vac a 50/60 Hz
<b>Corrente nominale (Ir)*</b>	referita ad una temp.di 40°C
<b>Corrente di fuga (IL)</b>	$\leq 0,6$ mA
<b>Tensione di prova (2s.)</b>	linea e massa 3000 Vdc o 1800 Vac linea e linea 1700 Vdc
<b>Categoria climatica</b>	HPF (25/085/21) -25°C to +85°C

Code	IR(A)*	L1(mH)	L2( $\mu$ H)	Cx( $\mu$ F)	Cy(pF)	R(M $\Omega$ )	Case	Circuit
AR45.1A	1	22	0.3	0.22	2200	1	A	A
AR45.2,5A	2.5	16	0.3	0.22	2200	1	F2	A
AR45.6,5A	6.5	4	0.05	0.47	22000	0.47	B	A
AR45.10A.S	10	4	0.03	0.47	22000	0.33	B	A
AR45.20A	20	1	0.025	0.22	4700	1	B	B

F = Faston, C = Leads, V = Screws.



— ASYMMETRICAL  
 - - - SYMMETRICAL



Available connections

**APPROVALS**



**Dimensions:**

See the page Dimensions  
 Consultare la pagina Dimensioni