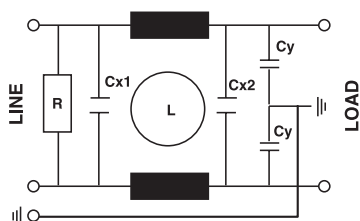




These filters grant a good insertion loss of the symmetric and asymmetric noises, generated by switches, contacts, etc. They are suitable for computers, printers, office equipments, etc.

I filtri di questa serie garantiscono una buona attenuazione in particolare delle radiointerferenze di tipo asimmetrico intermittente generate da interruttori, contatti strisciati, ecc. Sono adatti per computers, periferiche, macchine da ufficio, etc.

**Circuit diagram**



**Technical Specifications:**

**Manufacture**

Metal case, internal components sealed with self-extinguishing resin Vo

**Connections**

Faston 6.3 x 0.8mm ( $\leq 20A$ )  
 Flexible leads M5 screws  
 Ground terminal connected to case

**Electrical specifications:**

<b>Rated voltage (Vr)</b>	max. 250 Vac at 50/60 Hz
<b>Rated current (Ir)*</b>	referred to room temp.= 40°C
<b>Leakage current (IL)</b>	$\leq 0,6$ mA
<b>Voltage test (2s.)</b>	line to ground 3000 Vdc or 1800 Vac line to line 1700 Vdc
<b>Climatic category</b>	HPF (25/085/21) -25°C to +85°C

**Caratteristiche tecniche:**

**Costruzione**

Custodia metallica, componenti interni sigillati con resina autoestinguente Vo

**Terminali**

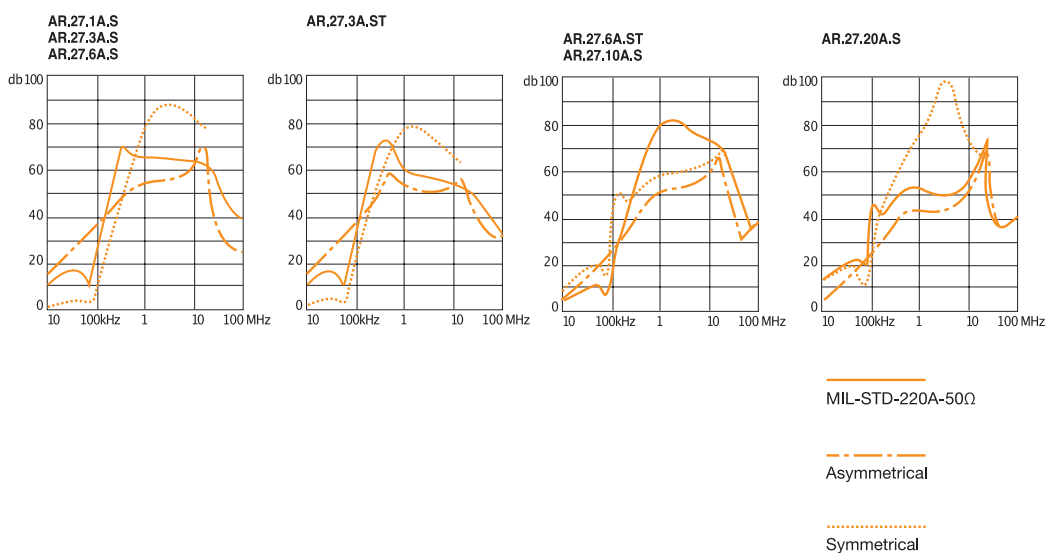
Faston 6.3 x 0.8mm ( $\leq 20A$ )  
 Cavi flessibili o viti da M5  
 Terminale di terra collegato alla custodia

**Caratteristiche elettriche:**

<b>Tensione nominale (Vr)</b>	max 250 Vac a 50/60 Hz
<b>Corrente nominale (Ir)*</b>	riferita ad una temp.di 40°C
<b>Corrente di fuga (IL)</b>	$\leq 0,6$ mA
<b>Tensione di prova (2s.)</b>	linea e massa 3000 Vdc o 1800 Vac linea e linea 1700 Vdc
<b>Categoria climatica</b>	HPF (25/085/21) -25°C to +85°C

Code	IR(A)*	L(mH)	Cx1(µF)	Cx2(µF)	Cy(pF)	R(MΩ)	Case
AR27.1A.S	1	1.8	0.1	0.1	4700	0.47	A
AR27.3A.S	3	1.8	0.1	0.1	4700	0.47	A
AR27.3A.ST	3	10	0.22	0.22	4700	0.47	F2
AR27.6A.S	6	1.8	0.1	0.1	4700	0.47	A
AR27.6A.ST	6	3.3	0.33	0.33	4700	0.47	F2
AR27.10A.S	10	1.8	0.47	0.47	4700	0.47	F2
AR27.20A.S	20	1.8	0.68	0.68	4700	0.47	B

F = Faston, C = Leads, V = Screws.



MIL-STD-220A-50Ω  
 Asymmetrical  
 Symmetrical

**APPROVALS**



**Dimensions:**

See the page Dimensions  
 Consultare la pagina Dimensioni