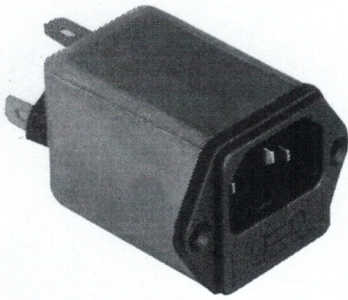


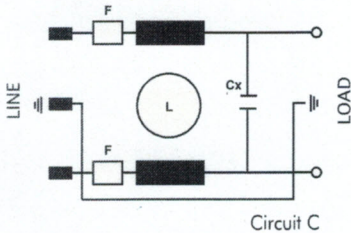
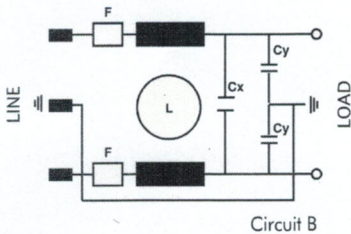
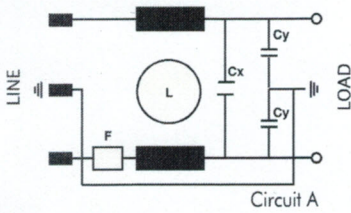
Series ARO9



Plug filter, small, suitable for all electric applications.

Filtro con spina, compatto, adatto per tutte le applicazioni elettroniche.

Circuit diagram



● **Electronics**
High Power
Electromechanical
Custom



Technical Specifications:

Manufacture

Plastic case or metal case and line connector with 1 or 2 fuses. Internal components sealed with self-extinguishing resin Vo

Connections

Faston 6.3 x 0.8mm.

Electrical specifications:

Rated voltage (Vr)	max 250 Vac at 50/60 Hz
Rated current (Ir)*	referred to room temp. = 40°C
Leakage current (IL)	≤ 0,6 mA, circuit C ≤ 0,02mA
Voltage test (2s.)	line to ground 3000 Vdc or 1800 Vac line to line 1700 Vdc
Climatic category	HPF (25/085/21) -25°C to +85°C

Caratteristiche tecniche:

Costruzione

Custodia plastica o metallica e presa rete con 1 o 2 fusibili. Componenti interni sigillati con resina autoestinguente Vo

Terminali

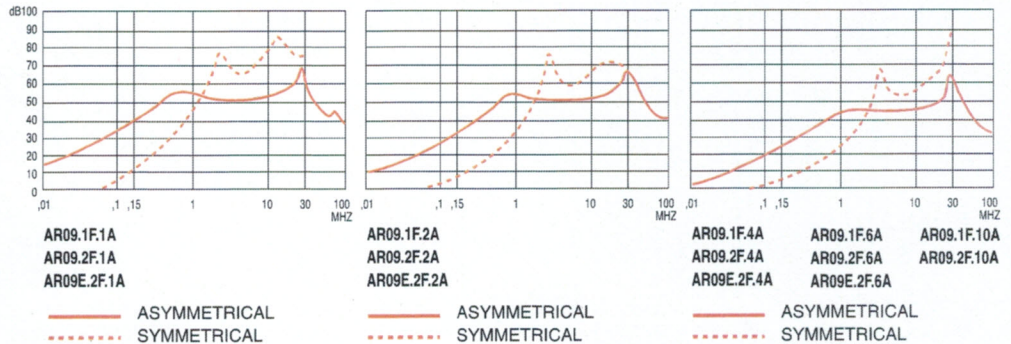
Faston 6.3 x 0.8mm.

Caratteristiche elettriche:

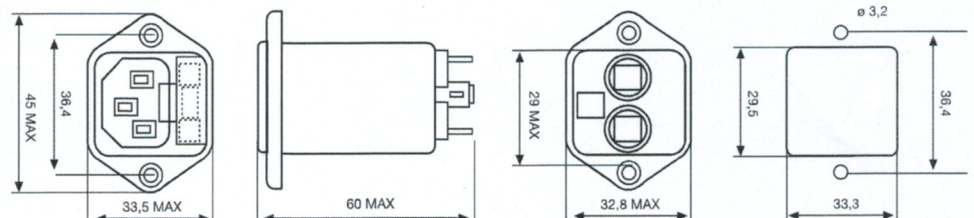
Tensione nominale (Vr)	max 250 Vac at 50/60 Hz
Corrente nominale (Ir)*	riferita ad una temp. di 40°C
Corrente di fuga (IL)	≤ 0,6 mA, circuit C ≤ 0,02mA
Tensione di prova (2s.)	linea e massa 3000 Vdc o 1800 Vac linea e linea 1700 Vdc
Categoria climatica	HPF (25/085/21) -25°C to +85°C

Code	IR(A)*	Cx(μF)	Cy(pF)	L(mH)	Circuit
ARO9.1F.1A..	1	0.1	2500	6	A
ARO9.1F.2A..	2	0.1	2500	2	A
ARO9.1F.4A..	4	0.1	2500	1	A
ARO9.1F.6A..	6	0.1	2500	1	A
ARO9.1F.10APL	10	0.1	2500	0.35	A
ARO9.2F.1A..	1	0.1	2500	6	B
ARO9.2F.2A..	2	0.1	2500	2	B
ARO9.2F.4A..	4	0.1	2500	1	B
ARO9.2F.6A..	6	0.1	2500	1	B
ARO9.2F.10APL	10	0.1	2500	0.35	B
ARO9E.2F.1A..	1	0.1	-	6	C
ARO9E.2F.2A..	2	0.1	-	2	C
ARO9E.2F.4A..	4	0.1	-	1	C
ARO9E.2F.6A..	6	0.1	-	1	C
ARO9E.2F.10A..	10	0.1	-	0.35	C

ME = Metal Case PL = Plastic Case



Dimensions



APPROVALS



ON REQUEST