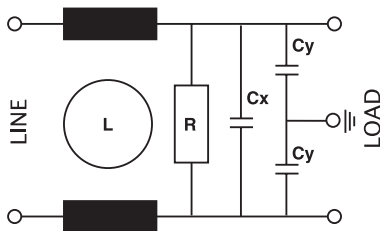




YT was created to use it in household appliances.

La serie YT è stata studiata prevalentemente per destinarla all'utilizzo elettrodomestico.

Circuit diagram



Technical Specifications:

Manufacture

Plastic case, internal components sealed with self-extinguishing resin Vo

Connections

Faston 6.3 x 0.8 mm or flexible leads

Electrical specifications:

Rated voltage (Vr)	125/250 Vac at 50/60 Hz
Rated current (Ir)*	referred to room temp.= 40°C
Voltage test (2s.)	line to ground 2250 Vdc or 1800 Vac line to line 1450 Vdc
Climatic category	HPF (25/085/21) -25°C to +85°C

Caratteristiche tecniche:

Costruzione

Custodia plastica, componenti interni sigillati con resina autoestinguente Vo

Terminali

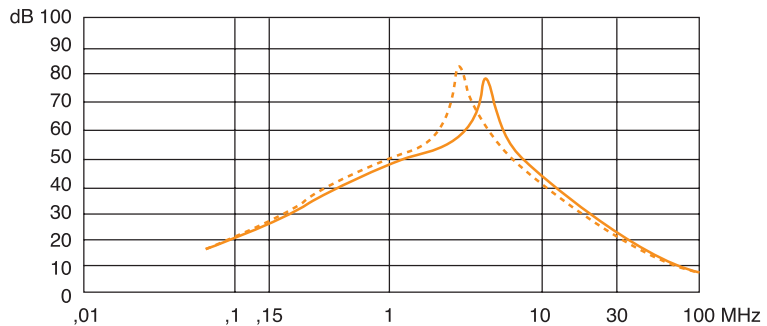
Faston 6.3 x 0.8 mm. o cavi flessibili

Caratteristiche elettriche:

Tensione nominale (Vr)	125/250 Vac a 50/60 Hz
Corrente nominale (Ir)*	riferita ad una temp.di 40°C
Tensione di prova (2s.)	linea e massa 2250 Vdc o 1800 Vac linea e linea 1450 Vdc
Categoria climatica	HPF (25/085/21) -25°C to +85°C

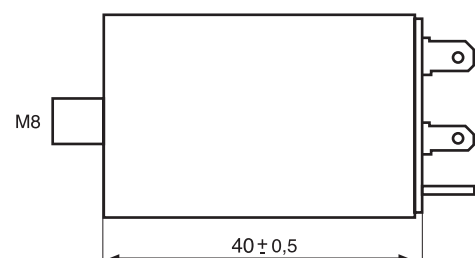
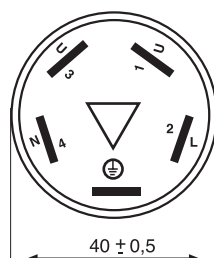
Code	IR(A)*	Cx(µF)	Cy(pF)	L(mH)	R(MΩ)	DxX (mm)	Leakage (mA)
YT16TA1	16	0.10	15000	1	1	40 x 40	2.5
YT16TA2	16	0.33	27000	1	1	40 x 40	3.2
YT16TA3	16	0.47	10000	1	1	40 x 40	2.3
YT16TA4	16	0.47	27000	1	0.68	40 x 40	3.2
YT16TA5	16	0.47	10000	1	0.68	40 x 40	2.3
YT10TA1	10	0.47	10000	1	0.68	40 x 40	2.3
YT10TA2	10	0.47	2200	1	1	40 x 40	0.6

Symmetrical (Line to line)



— CY = 10.000 - 15.000 pF
 - - - CY = 27000 pF

Dimensions



APPROVALS

