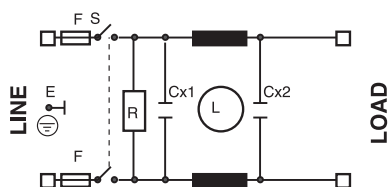




Plug filter with fuse-box and switch, suitable for all electric applications, even for applications with microprocessors.

Filtro con spina portafusibile, interruttore a bascula adatto per tutte le applicazioni elettroniche anche a microprocessore.

**Circuit diagram**



For medical applications      Circuit C

**Technical Specifications:**

**Manufacture**

Metal case and line connector with 1 or 2 fuses.  
 Internal components sealed with self-extinguishing resin Vo

**Connections**

Faston 6.3 x 0.8mm.

**Electrical specifications:**

<b>Rated voltage (Vr)</b>	max 250 Vac at 50/60 Hz
<b>Rated current (Ir)*</b>	referred to room temp.= 40°C
<b>Leakage current (IL)</b>	≤ 0,6 mA, circuit C ≤ 0,02mA
<b>Voltage test (2s.)</b>	line to ground 3000 Vdc or 1800 Vac line to line 1700 Vdc
<b>Climatic category</b>	HPF (25/085/21) -25°C to +85°C

**Caratteristiche tecniche:**

**Costruzione**

Custodia metallica e presa rete con 1 o 2 fusibili. Componenti interni sigillati con resina autoestinguente Vo

**Terminali**

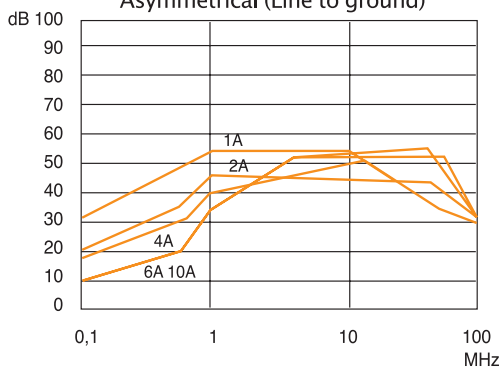
Faston 6.3 x 0.8mm.

**Caratteristiche elettriche:**

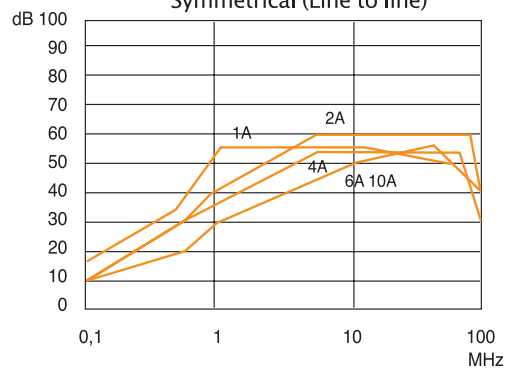
<b>Tensione nominale (Vr)</b>	max 250 Vac at 50/60 Hz
<b>Corrente nominale (Ir)*</b>	riferita ad una temp.di 40°C
<b>Corrente di fuga (IL)</b>	≤ 0,6 mA, circuit C ≤ 0,02mA
<b>Tensione di prova (2s.)</b>	linea e massa 3000 Vdc o 1800 Vac linea e linea 1700 Vdc
<b>Categoria climatica</b>	HPF (25/085/21) -25°C to +85°C

Code	IR(A)*	Cx (µF)	Cy(pF)	L (mH)	R (MΩ)	Circuit
AR10E.2F.1A	1	0.1	-	6	1	C
AR10E.2F.2A	2	0.1	-	2	1	C
AR10E.2F.4A	4	0.1	-	1	1	C
AR10E.2F.6A	6	0.1	-	1	1	C

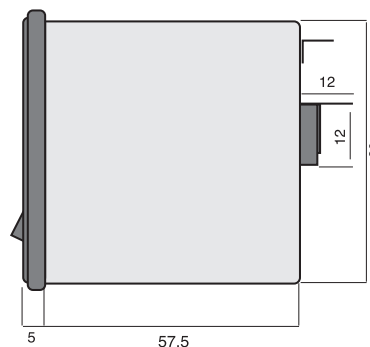
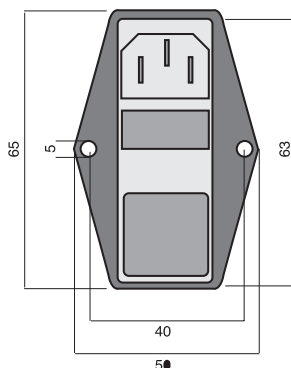
Asymmetrical (Line to ground)



Symmetrical (Line to line)



**Dimensions**



**APPROVALS**

