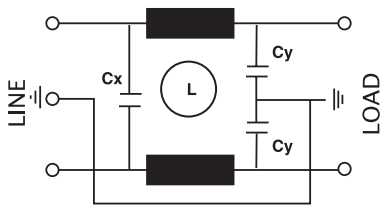




Plug filter, small, suitable for all electric applications.

Filtro con spina, compatto, adatto per tutte le applicazioni elettroniche.

Circuit diagram



Technical Specifications:

Manufacture

Metal case (line connectors according to IEC 320)

Connections

IEC 320 – Standard plug (IN);
 6.3 x 0.8mm. (OUT) ground terminal connected to case

Electrical specifications:

Rated voltage (Vr)	max 250 Vac at 50/60 Hz
Rated current (Ir)*	referred to room temp.= 40°C
Leakage current (IL)	≤ 0,8 mA
Voltage test (2s.)	line to ground 2250Vdc line to line 1450Vdc
Climatic category	HPF (25/085/21) -25°C to +85°C

Caratteristiche tecniche:

Costruzione

Custodia metallica (presa rete IEC 320)

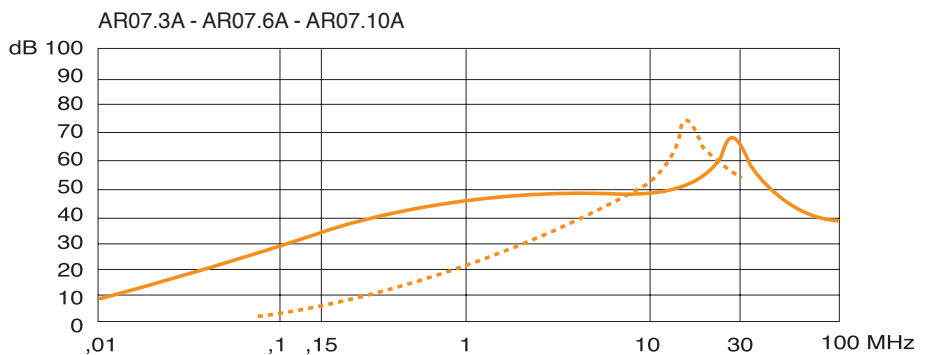
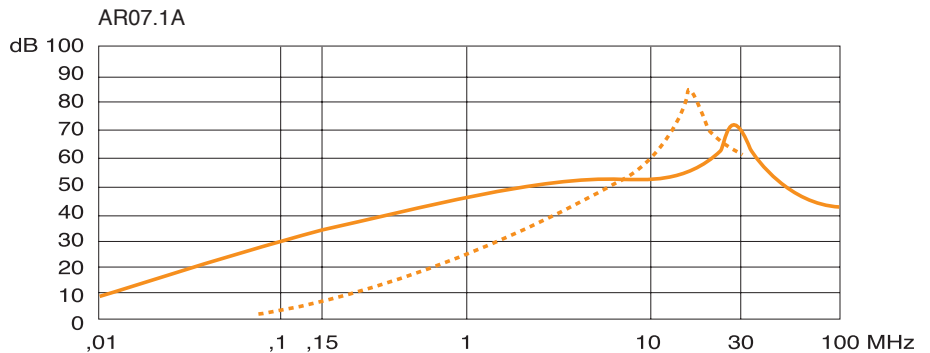
Terminali

Ingresso presa rete IEC 320,
 uscita Faston 6.3 x 0.8mm.
 Terminale di terra collegato al contenitore.

Caratteristiche elettriche:

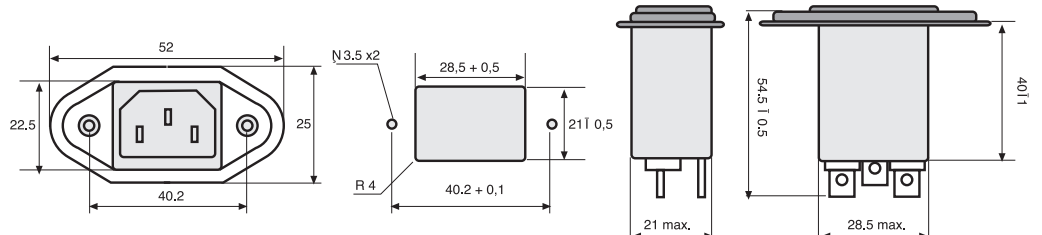
Tensione nominale (Vr)	max 250 Vac at 50/60 Hz
Corrente nominale (Ir)*	referred to a temp. di 40°C
Corrente di fuga (IL)	≤ 0,8 mA
Tensione di prova (2s.)	linea e massa 2250Vdc linea e linea 1450Vdc
Categoria climatica	HPF (25/085/21) -25°C to +85°C

Code	IR(A)*	Cx(μF)	Cy(pF)	L(mH)
ARO7.1A	1	0.1	3300	3.7
ARO7.3A	3	0.1	3300	1.8
ARO7.6A	6	0.1	3300	0.7
ARO7.10A	10	0.1	3300	0.3



— ASYMMETRICAL (Line to ground)
 - - - SYMMETRICAL (Line to Line)

Dimensions



APPROVALS



ON REQUEST

