

Series

ARO2



ARO2

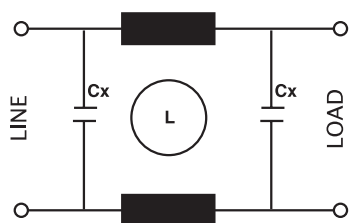
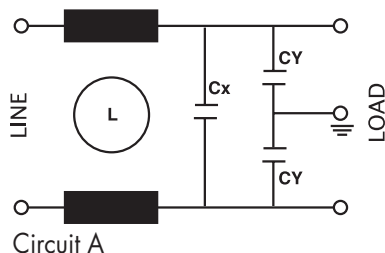
Printed circuit filter, small and economic, it protects the circuit against noises by the net and eliminates spurious emission.

Filtro da circuito stampato, compatto, economico, protegge l'apparecchiatura dai disturbi provenienti dalla rete e limita le emissioni spurie.



ARO2.V

Circuit diagram



For medical applications

- **Electronics**
- High Power**
- Electromechanical**
- Custom**



Technical Specifications:

Manufacture

Plastic case, sealed with self-extinguish resin

Connections

For PCB mounting, or 2.8 x 0.5 mm or flexible leads

Electrical specifications:

Rated voltage (Vr)	max 250 V up to 50/60 Hz
Rated current (Ir)*	referred to room temp.= 40°C
Leakage current (IL)	≤ 0,25 mA circuit B ≤ 0,02 mA
Voltage test (2s.)	line to ground 3000Vdc or 1800 Vac line to line 1700 Vdc
Climatic category	HPF (25/085/21) -25°C to +85°C

Caratteristiche tecniche:

Costruzione

Custodia plastica sigillata in resina autoestinguente Vo

Terminali

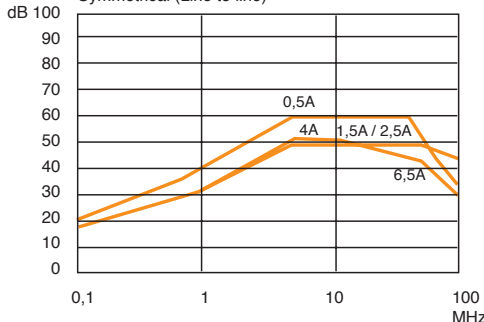
Per montaggio da circuito stampato, con faston 2.8 x 0.5 mm o con fili flessibili

Caratteristiche elettriche:

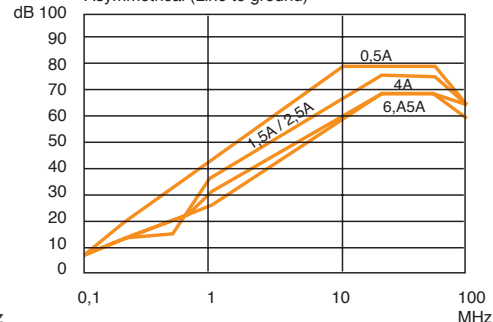
Tensione nominale (Vr)	max. 250V~ a 50/60 Hz
Corrente nominale (Ir)*	riferita ad una temp.di 40°C
Corrente di fuga (IL)	≤ 0,25 mA circuit B ≤ 0,02 mA
Tensione di prova (2s.)	linea e massa 3000Vdc o 1800 Vac linea e linea 1700 Vdc
Categoria climatica	HPF (25/085/21) -25°C a +85°C

Code	IR(A)*	Cx(μF)	Cy(pF)	L(mH)	Circuit
ARO2.0.5A	0.5	0.1	2500	40	A
ARO2.1.5A	1.5	0.1	2500	6	A
ARO2.2.5A	2.5	0.1	2500	2	A
ARO2.4A	4	0.1	2500	1	A
ARO2.6.5A	6.5	0.1	2500	1	A
ARO2.10A	10	0.1	2500	0,35	A
ARO2.E.0.5A	0.5	0.1	-	40	B
ARO2.E.1.5A	1.5	0.1	-	6	B
ARO2.E.2.5A	2.5	0.1	-	2	B
ARO2.E.4A	4	0.1	-	1	B
ARO2.E.6.5A	6.5	0.1	-	1	B
ARO2.V.0.5A	0.5	0.1	2500	40	A
ARO2.V.1.5A	1.5	0.1	2500	6	A
ARO2.V.2.5A	2.5	0.1	2500	2	A
ARO2.V.4A	4	0.1	2500	1	A
ARO2.V.6.5A	6.5	0.1	2500	1	A
ARO2.V.10A	10	0.1	2500	0,35	A
ARO2.VE.0.5A	0.5	0.1	-	40	B
ARO2.VE.1.5A	1.5	0.1	-	6	B
ARO2.VE.2.5A	2.5	0.1	-	2	B
ARO2.VE.4A	4	0.1	-	1	B
ARO2.VE.6.5A	6.5	0.1	-	1	B

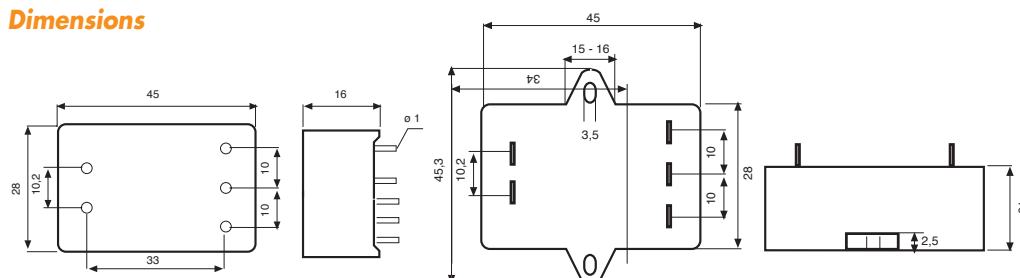
Symmetrical (Line to line)



Asymmetrical (Line to ground)



Dimensions



APPROVALS



ON REQUEST

